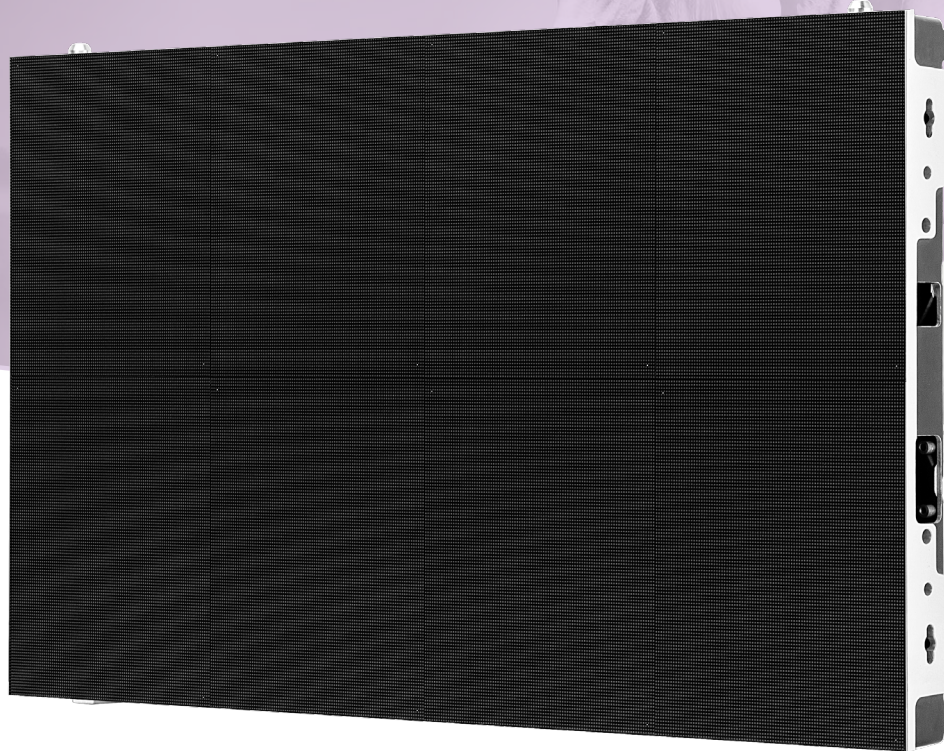


LED Screen HD WALL SERIES



ARECH

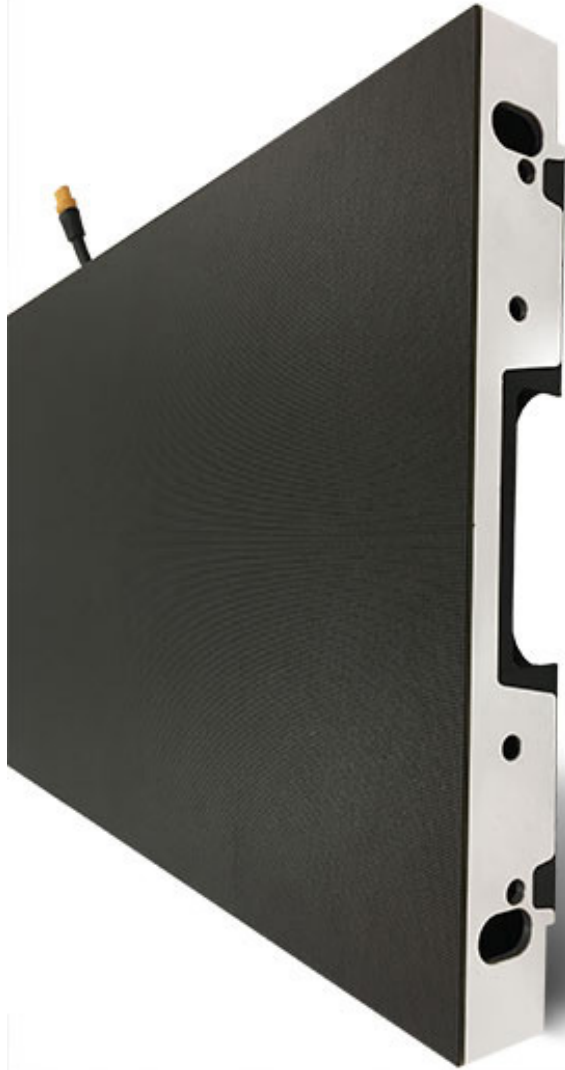
Your Trusted Manufacturer Partner

2F BLG1, Xintaiyang Industrial Park, NO. 114
Zhulongtian Road, Shiyan Street, Baoan District,
Shenzhen, China

- +86 755 29191985
- +86 755 29191985
- overseas@arechtech.com
- <https://arechtech.com>
- <https://arechtech-led-display.eu>



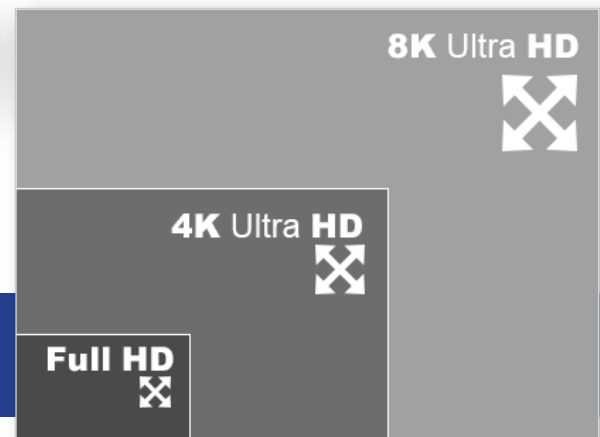
LED Screen HD Wall SERIES



High Definition LED Video Screen

Our range of Wall LED Screen is for the television industry, engineered by LED video wall experts, our design addresses the unique benefits of fine pitch LED. The architecture uniquely addresses mounting, alignment, space constraints, reliability, quick service, power redundancy, data redundancy, and long life. We designed LED TVs with high quality and high stability, A 16:9 aspect ratio, and precise pixel pitches to ensure every model achieves exact Full HD, 4K, or 8K resolutions. And These High-resolution LED screens become a natural part of our lives.

**Resolution makes the difference,
High Definition makes every scene
a highlight!**



Front maintenance!



All parts front accessible



Fast and easy to take out the module/power supply



Essential Care service package up to 2 years



Other advantage point



Friendly adjustable brightness



Seamless splicing, high precision

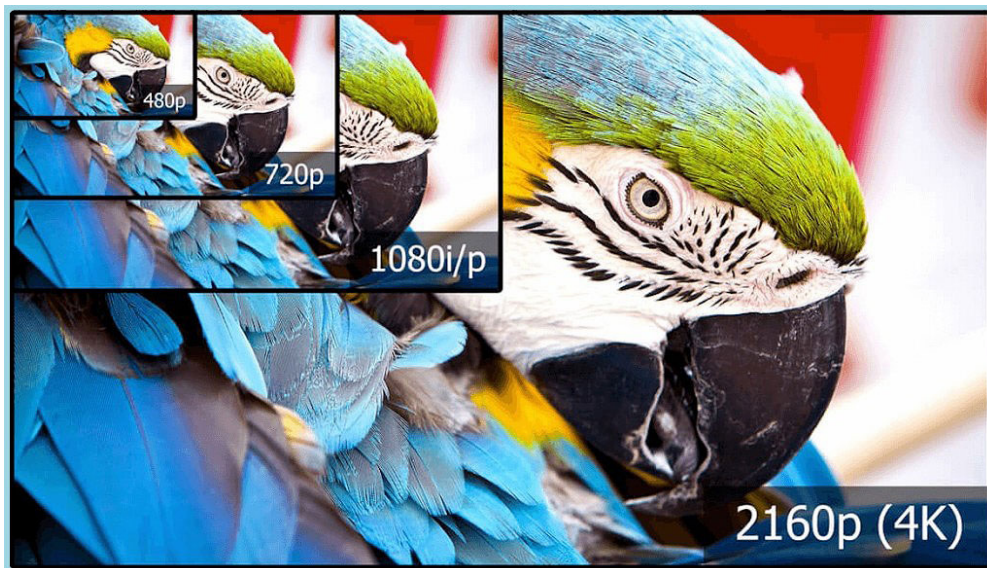


Light-weight, 4.5kg/panel

Our Wall LED Screens support 3840hz high refresh rate, if you have High definition image demand on the Conference, control room, hotel, home, meeting room, airport, show room etc., Wall LED Screen is the best choice ever.

Size and quality really does matter!

The Aspect ratio on ARECH HD Wall LED Screen to support a 16:9 ratio is typically seen as optimal because it is capable of the highest resolution. It is also easy to capture this aspect ratio on almost all devices.



HD

High definition Wall LED Display



600x337.5 & 400x450mm ARECH HD Wall LED Screen Specification

| Description | ACIDP00.9TV | ACIDP01.2TV | ACIDP01.5TV | ACIDP01.8TV | ACIDP01.2WW | ACIDP01.5WW | ACIDP01.6WW |
|-------------------------|-------------------------------|-------------|-------------|-------------|---------------|-------------|-------------|
| Pixel Pitch | 0.9mm | 1.2mm | 1.5mm | 1.8mm | 1.2mm | 1.5mm | 1.6mm |
| LED Type | MINI LED | SMD1010 | SMD1010 | SMD1010 | MINI LED | SMD1010 | SMD1212 |
| Module Dimension WxH | 150×168.75mm | | | | 200×150mm | | |
| Cabinet Dimension WxH | 600×337.5mm | | | | 400×450mm | | |
| Cabinet Material | Die-cast Aluminum | | | | | | |
| Cabinet Weight | 4.5kg/cabinet | | | | 5.5kg/cabinet | | |
| Service Type | Front | | | | | | |
| Brightness | 600-800nits | | | | | | |
| Processing | 16 bit | | | | | | |
| Colors | 281 trillion | | | | | | |
| Drive Mode | Dynamic | | | | | | |
| Hor. Viewing Angle | 160° +/-5° (@50% brightnesss) | | | | | | |
| Vert. Viewing Angle | 160° +/-5° (@50% brightnesss) | | | | | | |
| Power Consumption | 280 W/m²(typ.) | | | | | | |
| Refresh Rate | Adjustable | | | | | | |
| IP Rating | IP30 | | | | | | |
| Operating Power Voltage | 100-240V / 50-60Hz | | | | | | |
| Operating Temperature | -10°C to +40°C | | | | | | |
| Operating Humidity | 10% to 90% | | | | | | |
| Standard | CE / FCC | | | | | | |
| Warranty | 2 years | | | | | | |



Your Trusted Manufacturer Partner

2F BLG1, Xintaiyang Industrial Park, NO. 114
Zhulongtian Road, Shiyan Street, Baoan District,
Shenzhen, China

+86 755 29191985
+86 755 29191985
@overseas@arechtech.com
https://arechtech.com
https://arechtech-led-display.eu

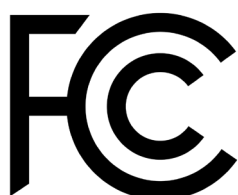


400x300mm & 480x480mm ARECH HD Wall LED Screen Specification

| Description | ACIDP01.2HD | ACIDP01.5HD | ACIDP01.6HD | ACIDP01.5WP | ACIDP01.8WP | ACIDP02.5WP |
|-------------------------|------------------------------|-------------|-------------|---------------|-------------|-------------|
| Pixel Pitch | 1.2mm | 1.5mm | 1.6mm | 1.5mm | 1.8mm | 2.5mm |
| LED Type | MINI LED | SMD1212 | SMD1212 | SMD1212 | SMD1515 | SMD2121 |
| Module Dimension WxH | 200x150mm | | | 240x240mm | | |
| Cabinet Dimension WxH | 400x300mm | | | 480x480mm | | |
| Cabinet Material | Die-cast Aluminum | | | | | |
| Cabinet Weight | 5.2kg/cabinet | | | 5.8kg/cabinet | | |
| Service Type | Front | | | | | |
| Brightness | 500-600nits | 500-600nits | 500-600nits | 500-600nits | 600-800nits | 600-800nits |
| Processing | 16 bit | | | | | |
| Colors | 281 trillion | | | | | |
| Drive Mode | Dynamic | | | | | |
| Hor. Viewing Angle | 160° +/-5° (@50% brightness) | | | | | |
| Vert. Viewing Angle | 160° +/-5° (@50% brightness) | | | | | |
| Power Consumption | 280 W/m ² (typ.) | | | | | |
| Refresh Rate | Adjustable | | | | | |
| IP Rating | IP30 | | | | | |
| Operating Power Voltage | 100-240V / 50-60Hz | | | | | |
| Operating Temperature | -10°C to +40°C | | | | | |
| Operating Humidity | 10% to 90% | | | | | |
| Standard | CE / FCC | | | | | |
| Warranty | 2 years | | | | | |



We assure the quality, that's why we do quantity!



640x480mm ARECH HD Wall LED Screen Specification

| Description | ACIDP01.2GM | ACIDP01.5GM | ACIDP01.6GM | ACIDP01.8GM | ACIDP02.0GM | ACIDP02.5GM |
|-------------------------|------------------------------|-------------|-------------|-------------|-------------|-------------|
| Pixel Pitch | 1.2mm | 1.5mm | 1.6mm | 1.8mm | 2.0mm | 2.5mm |
| LED Type | MINI LED | SMD1212 | SMD1212 | SMD1515 | SMD1515 | SMD2121 |
| Module Dimension WxH | 320x160mm | | | | | |
| Cabinet Dimension WxH | 640x480mm | | | | | |
| Cabinet Material | Die-cast Aluminum | | | | | |
| Cabinet Weight | 7.5kg/cabinet | | | | | |
| Service Type | Front | | | | | |
| Brightness | 500-600nits | 500-600nits | 500-600nits | 600-800nits | 600-800nits | 600-800nits |
| Processing | 16 bit | | | | | |
| Colors | 281 trillion | | | | | |
| Drive Mode | Dynamic | | | | | |
| Hor. Viewing Angle | 160° +/-5° (@50% brightness) | | | | | |
| Vert. Viewing Angle | 160° +/-5° (@50% brightness) | | | | | |
| Power Consumption | 280 W/m ² (typ.) | | | | | |
| Refresh Rate | Adjustable | | | | | |
| IP Rating | IP30 | | | | | |
| Operating Power Voltage | 100-240V / 50-60Hz | | | | | |
| Operating Temperature | -10°C to +40°C | | | | | |
| Operating Humidity | 10% to 90% | | | | | |
| Standard | CE / FCC | | | | | |
| Warranty | 2 years | | | | | |

LED Screen HD WALL SERIES

